



Series: *The Four Voices*

Pressures of Flesh

Matthew 4:1-4; 5-7; 8-10

NOTES:

The Big Idea: _____

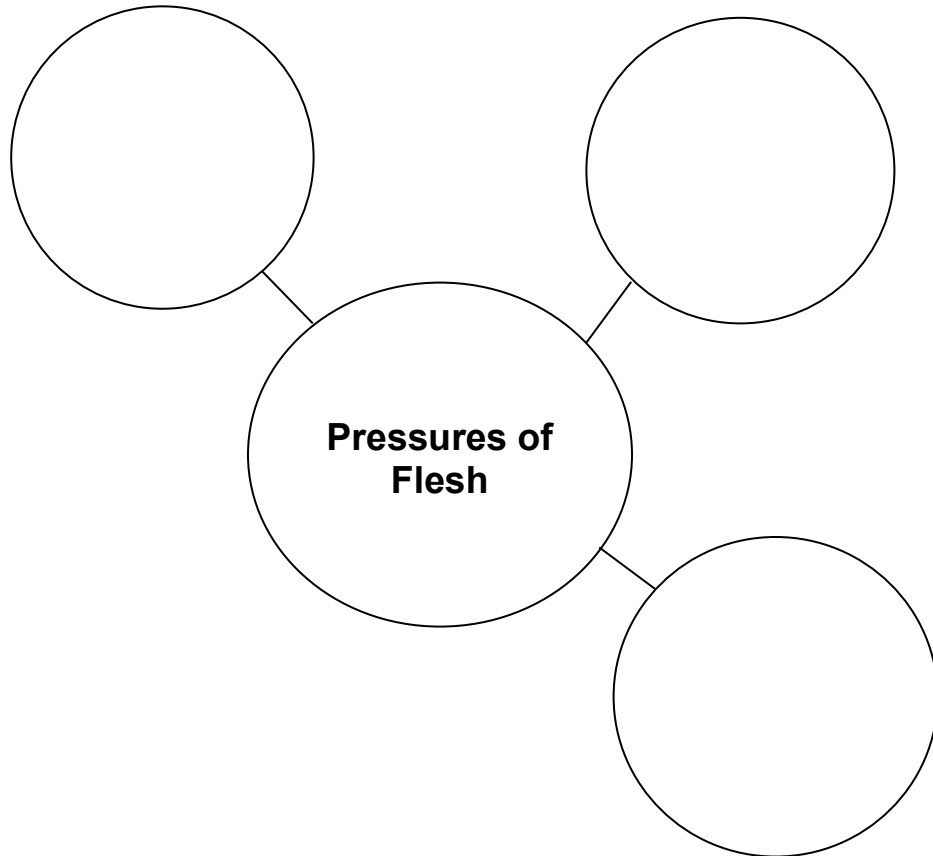


TABLE TALK:

1. Can you recognize the voice of the flesh? Does it constantly require attention?
2. Jesus' flesh was at a vulnerable state and was challenged with things that could be achieved through his abilities. When your flesh is challenged with an obstacle, will you lean on your own abilities?
3. What are some ways that you can tame the flesh to demand your respect in some tempting situations?

The Man in the Mirror Bible Study community is a movement of men passionate about growing and helping as many other men as possible grow too. We come from all walks of life. You're invited to become a member of this movement. Learn more at mimbiblestudy.com. We will always be stronger together. Email Pat at patrickmorley@maninthemirror.org or Brett at baclemmer@maninthemirror.org.